

- srv_desc**
- 1.1.2.1 Aortography, Abdom..
 - 1.1.2.2 Pelvis/Lower Ext Ang..
 - 4.11.1.1 Ven Acc Central Ins..
 - 4.11.1.2 Ven Acc Peripheral I..
 - 4.11.2.2 Ven Acc Tunnel Ext..
 - 4.11.3 Venous Access Expl..
 - 5.1 Dialysis Shunt Angio
 - 5.2 Dialysis Shunt PTA
 - 11.9.2 Conscious Sedation

Service Volume Trends

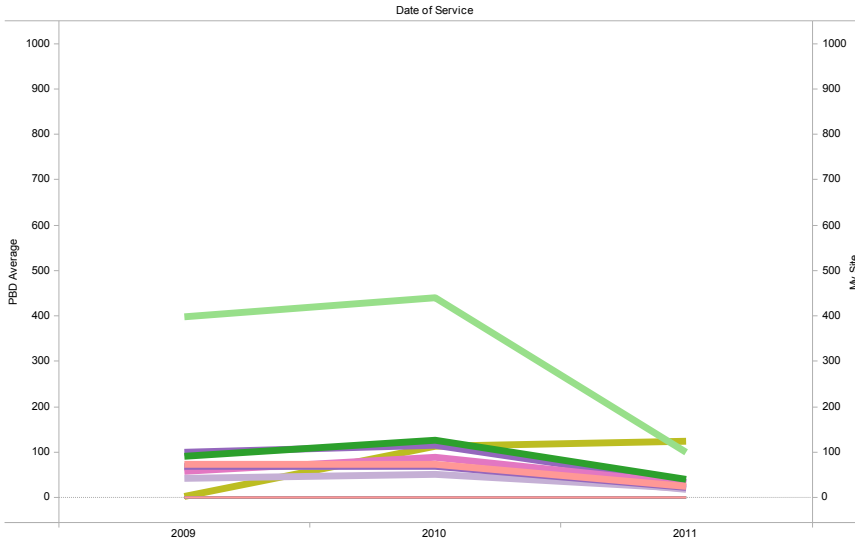
(to expand datedimension hover to left of 2009 at bottom for +; to shrink hover to left of 2009 at top for -)

This chart illustrates trends in Service Volume for both your site and the PBD by plotting service frequency during the entire 2009-2011 timeframe.

Each Service is depicted by a different color, according to the legend on the left of the screen. The average PBD volume is graphed using a thick line. Your site's volume is graphed using a thin line.

This report can be filtered by Service by checking one or more boxes in the Service selector on the right of the screen. If a Service exists in HI-IQ but was not performed, it is not displayed in the Service filter. No locally-added Services are included in this report.

- Line Thickness**
- My Site
 - PBD Average



- srv_desc**
- 1.0 Arteriography, Diagnostic
 - 1.1 Aortic Injections (Non-selective)
 - 1.1.1 Thoracic Aortic Inject
 - 1.1.1.1 Cerv-Cerebral Ang N.S.
 - 1.1.1.2 Upper Ext Angio, N.S.
 - 1.1.1.3 Aortography, Thoracic
 - 1.1.2 Abdominal Aorta Inject
 - 1.1.2.1 Aortography, Abdomen
 - 1.1.2.2 Pelvis/Lower Ext Angio N.S.
 - 1.1.2.3 Translumar Aortogram
 - 1.2 Peripheral Ang (selective)
 - 1.2.1 Upper Ext Ang Sel
 - 1.2.2 Lower Ext Ang Sel
 - 1.3 Neuro Ang (selective)
 - 1.3.1 Innom/Subcl Ang Sel (prox)
 - 1.3.2 Carotid Ang Sel
 - 1.3.2.1 CCA Ang Sel
 - 1.3.2.2 ICA Ang Sel
 - 1.3.2.3 ECA Ang Sel
 - 1.3.3 Vertebral Ang Sel
 - 1.3.4 Other Neuro Ang Sel
 - 1.3.5.1 Lumbar A Ang Sel
 - 1.3.5.2 Intercostal A Ang Sel
 - 1.3.5.3 Spinal Other Ang Sel
 - 1.4 Visceral Ang Sel
 - 1.4.1 Bronchial Ang Sel
 - 1.4.2 Celiac Ang Sel
 - 1.4.2.1 Hepatic A Angio Select
 - 1.4.2.2 Gastroduodenal A Angio Sel
 - 1.4.2.3 Gastric A Angio Sel
 - 1.4.2.4 Pancreatic A Angio Sel
 - 1.4.2.5 Splenic A Angio Sel
 - 1.4.2.6 Celiac A Other Angio Sel
 - 1.4.2.7 Hepatic Ang Sel
 - 1.4.2.8 Gastroduodenal Ang Sel
 - 1.4.2.9 Gastric Ang Sel
 - 1.4.2.10 Pancreatic Ang Sel
 - 1.4.2.11 Splenic Ang Sel
 - 1.4.2.13 Splenic Ang Sel
 - 1.4.2.14 Hepatic Ang Sel
 - 1.4.2.16 Gastric Ang Sel
 - 1.4.3 SMA Ang Sel
 - 1.4.4 IMA Ang Sel